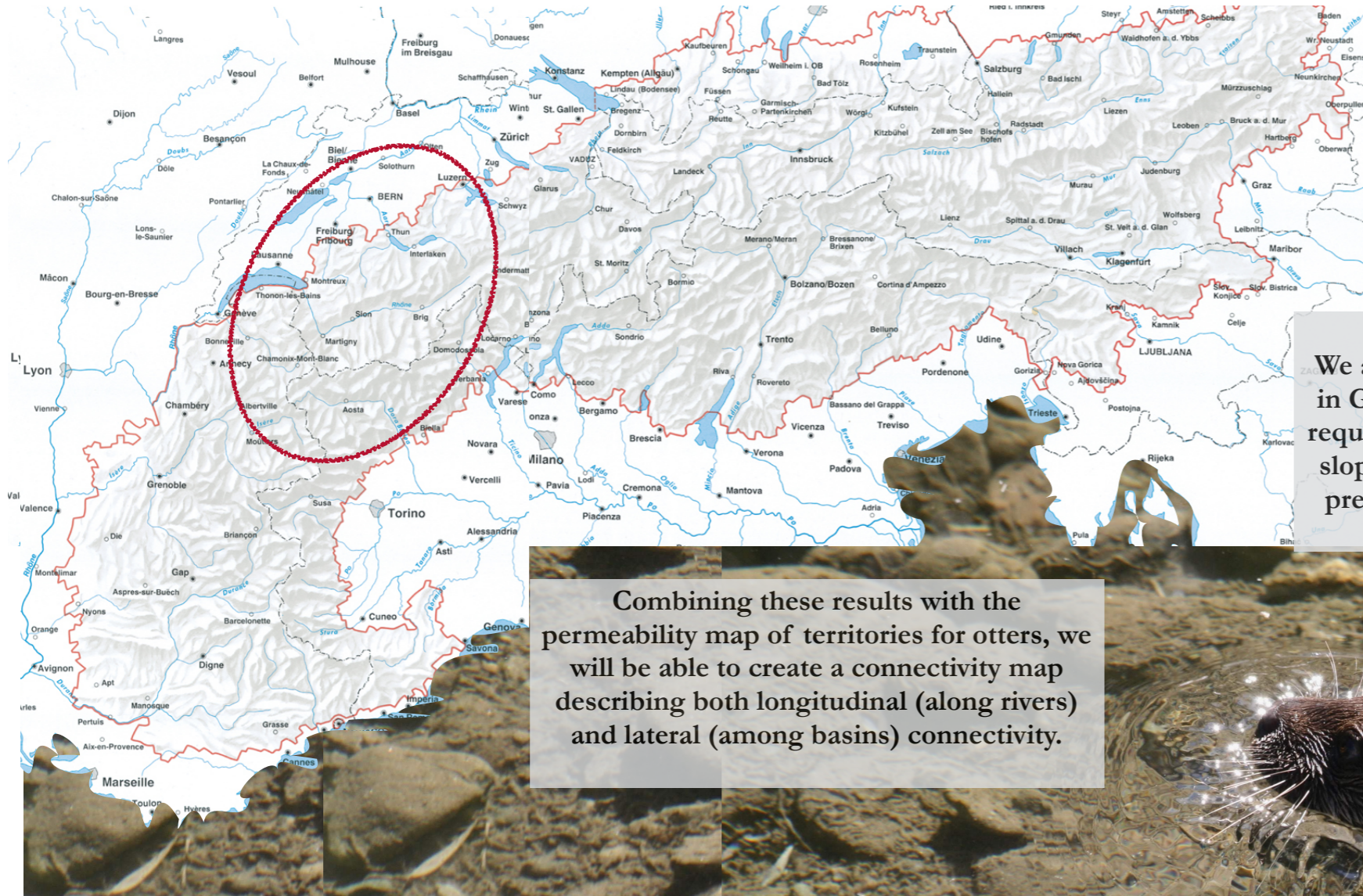




Where to go from? Connectivity among Alpine borders in the Gran Paradiso area for *Lutra lutra*

Ferrari C.¹, Leoncini F.², DiFebbraro M.³, Bassano B.¹, Loy A.³

¹ Centro studi fauna alpina Parco Nazionale Gran Paradiso; ² Università degli Studi di Padova; ³ Università degli studi del Molise



In recent years evidence is accumulating of a slow, natural recovery of Eurasian otter in the European Alpine region. The numerous protected areas of this region may facilitate the permanence of this species, but the connectivity among areas has not been investigating yet.

Method and aims

We aim to produce an expert base Habitat Suitability model in G.IS. (Loy et al., 2009) by combining the main ecological requirements for the species (river bank, riparian vegetation, slope,..); the model will be validate with the latest points of presence of otters in the south of France and Swiss (JME, 2020).

Combining these results with the permeability map of territories for otters, we will be able to create a connectivity map describing both longitudinal (along rivers) and lateral (among basins) connectivity.

Long term result

By identifying potential ecological corridors and suitable habitat relevant for the expansion of the species, it will be possible to plan targeted conservation and monitoring actions for the future.

